

FACIAL MASKS

THE RIGHT SOLUTIONS FOR A GROWING TREND

Hallstar's portfolio of actives, emollients, emulsifiers and film formers are ideal ingredients for facial masks. Our collaborative approach means finding the right solution to help customers meet local needs and trends. Hallstar ingredients can be used in a variety of mask types, including peel-off, clay, warm oil or non-woven tissue.

Natural Liquid Crystal Emulsifiers

- Olivem® 1000
- Olivem® VS Feel

Hyperfluid Emulsifier

- Olivem® LV Flex

Film Former

- Florasolvs® Jojoba-80

Emollients

- Biochemica® Ingredients

Water Soluble Emollients

- Olivem® 300
- Florasolvs® Macadamia-16
- Florasolvs® Sunflower-10

Active Ingredients

- EuroI® BT
- EuroI® WHT
- Biochemica® BioVera Powder



The rise of multifunctional facial masks across multiple regions has led to consumer demand for innovative new formulas. These masks draw impurities out of the skin, and can also be used as delivery systems for exfoliating, hydrating, soothing and toning.

Olive Mattifying Mousse

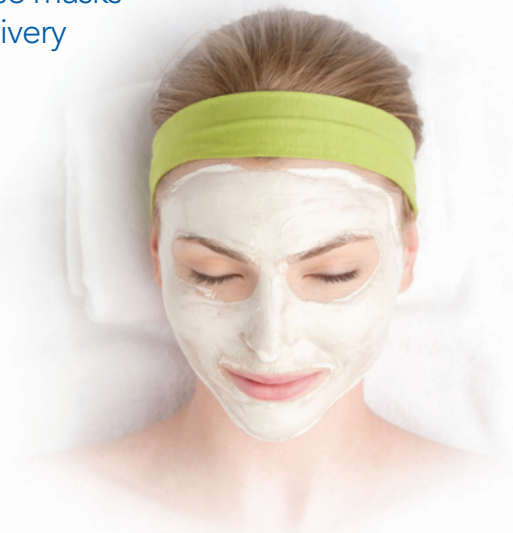
This mousse draws sebum, pollutants and impurities from the skin. It combines powerful and gentle active ingredients to calm redness and smooth expression lines through deep skin hydration.

Phase	INCI Name [INN/USAN] (Other Information)	Trade Name	% Wt
A	Water (Aqua) (deionized)		up to 100
	Caprylyl Glycol, Phenoxyethanol, Hexylene Glycol		1.00
	Olea Europaea (Olive) Leaf Extract, Water	Eurol® BT	0.30
	Olive Oil PEG-7 Esters	Olivem® 300	1.50
B	Xanthan Gum (standard grade)		0.20
	Propanediol		1.00
C	Ammonium Acryloyldimethyltaurate/VP Copolymer		2.00
D	Illite		7.00
	Titanium Dioxide [Titanium Dioxide]		3.00
E	Bisabolol	RTD™ Alpha-Bisabolol Natural	0.20
	Sodium PEG-7 Olive Oil Carboxylate (61% solids)	Olivem® 460	2.00

DetoxHydration Mask

This facial mask soothes, calms and repairs skin through intense nourishment and hydration. Antioxidants and plant extracts detoxify stressed skin, restoring health and radiance.

Phase	INCI Name [INN/USAN] (Other Information)	Trade Name	% Wt
A	Water (Aqua) (deionized)		up to 100
	Disodium EDTA		0.05
	Hydroxypropyl Guar		1.00
B	Olive Oil PEG-7 Esters	Olivem® 300	1.50
	Propylene Glycol, Water, Calendula Officinalis Flower Extract		0.30
B	Propylene Glycol, Water, Chamomilla Recutita (Matricaria) Flower Extract		0.30
	Betaine		0.20
	Panthenol		0.30
	Olea Europaea (Olive) Leaf Extract, Water	Eurol® BT	0.20
C	Preservative		a.n.
	Sodium Hydroxide		a.n.



Endless Emotion — Peel-Off Mask

This mask works to smooth out fine lines while improving the skin's appearance and texture. It can be used as a day cream, or as a peel-off mask by pairing with the CaCl₂ 5% solution after application.

Phase	INCI Name [INN/USAN] (Other Information)	Trade Name	% Wt
A	Water (Aqua) (deionized)		up to 100
	Disodium EDTA		0.05
B	Algin		1.50
	Sclerotium Gum		0.30
	Xanthan Gum (standard grade)		0.20
	Glycerin		4.00
C	Cetearyl Olivatate, Sorbitan Olivatate	Olivem® 1000	3.00
	Ethylhexyl Olivatate	Sensolene®	2.00
	Sclerocarya Birrea Seed Oil	Biochemica® Marula Oil Ref	4.00
	Ethylhexyl Methoxycrylene	SolaStay® S₁	2.00
	BHT		0.50
D	Tocopherol	Biochemica® Vitamin E Nat	3.00
	Nylon-6		4.00
D	Synthetic Fluorophlogopite, Titanium Dioxide, Tin Oxide		1.00
	Water, Hydrolyzed Barley Protein		1.00
E	Olea Europaea (Olive) Leaf Extract, Water	Eurol® BT	0.30
	Retinyl Palmitate, Helianthus Annuus (Sunflower) Seed Oil		0.40
G	Preservative		a.n.